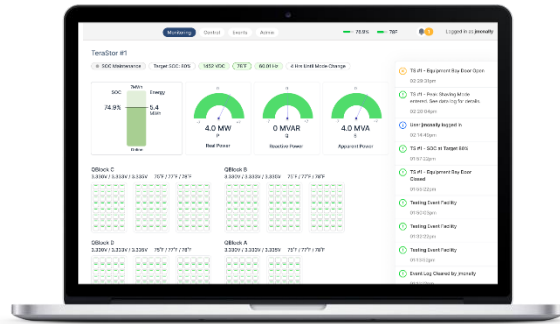


StorView™

Revolutionary energy management with unparalleled efficiency, reliability and control.

StorView optimizes energy utilization—seamlessly integrating sources, inputs and storage. Powered by advanced algorithms and artificial intelligence, it continuously monitors energy supply/demand, making intelligent decisions in real-time to ensure optimal energy distribution and financial decisions.



Highly Scalable, Distributed Control

The system leverages historical data, current patterns and user preferences, to make accurate forecasts for energy needs and to optimize usage of available resources.

Intuitive User Interface

Through a centralized dashboard, monitor and manage energy flows, adjust energy profiles and access comprehensive reports. Remote access enables energy ecosystem management from anywhere, at any time.

Safety and Reliability

Advanced security measures protect against cyber threats, ensuring privacy and integrity of energy infrastructure. Intelligent fault detection and predictive maintenance capabilities proactively identify and resolving issues for optimal performance and minimal downtime.

Seamless Integration

Open communication protocols and interoperability for easy integration with a wide range of sources, systems and technologies. This ensures compatibility and flexibility, making it a versatile choice for various energy management setups.

StorView is a world class energy management system, offering unparalleled efficiency, control and reliability. With its advanced features, predictive analytics and seamless integration capabilities you will be able to experience a new level of energy optimization and take charge of your energy future.

Applications

- Microgrids and islands
- Frequency regulation
- Generation enhancement
- Capacity peak power
- Renewable integration
- T&D deferral

Operating Modes

- AGC dispatch
- Manual dispatch
- Load leveling
- Model-based dispatch
- Renewables firming

Safety and Reliability

- Real and reactive power dispatch
- State of charge, State of health
- Cell voltage and temperature
- Inverter and cooling system status
- Fire system status
- Transformer overtemp

Seamless Integration

- DNP3
- IEC61850
- Modbus/TCP
- NTP
- Secure web interface
- Local and cloud-based data logging
- Ethernet/IP to **TeraStor**™ batteries